

星河科研社
Galaxy
Scientific
Group





星空 · 天文學

BEYOND THE STARS

夜幕低垂，繁星點點。這片瑰麗又神秘的大自然景象造就了一門充滿藝術氣息、古老卻又先進的學問 — 天文學。

自遠古農民觀天象以制定各項日常活動，發展出時間曆法，再衍生出各項科學，至近年香港強化天文教育、邵逸夫爵士設立天文學獎、中國在太空探索的成就，都代表著天文學數千年來的無窮活力及漸見大眾化，這門源遠流長的學問將日益普及。

不少天文愛好者會以消閒心態享受星空，或以求學心態參與天文活動，鍛鍊個人觀察與報告能力及擴闊視野。透過普及天文學我們更希望帶動環保意識及提昇對大自然的嚮往、推動多元智能教育，完善個人心智。

Ever since the old days people understand how nature and we are inseparable. Peasants relied on the sky to set their daily routines, which slowly developed into calendar. From this came all sorts of knowledge; and among them the oldest and the most mysterious of all, astronomy.

Though ancient, there has been a significant growth in the interest in astronomy in recent years. The recognition of contributions in the field of astronomy by the Shaw Prize and China's achievement in space advancement manifest the importance of this knowledge and helps to bring the study of the outer space closer to the community.

All in all, the study of astronomy can equip us with various skills needed in learning, and brings us to better appreciation of art and nature. It is with this that we can be a responsible global citizen.

目錄

Contents

- 
- | | |
|-----------------------------------|---------------------------------|
| 03 關於我們
About Us | 28 器材服務
Equipment Services |
| 04 教育服務
Education Services | 34 數據服務
Data Services |
| 08 主題活動
Themed Programs | 35 技術交流
Technical Exchange |
| 12 旅遊服務
Travel Services | 38 代理品牌
Distributed Brand |
| 16 教育設施
Education Facilities | 39 星空小聚
Astrocafe |
| 21 專業服務
Professional Services | 40 服務參考
Partners & Customers |
| 25 技術開發
Technical Developments | |



星河科研社建於西藏 4300 米海拔全球最高海拔的私人天文台之一

Galaxy Scientific Group's observatory is established at an altitude of 4300m in Tibet, making it one of the highest private astronomical observatories in the world

關於我們

About Us

星河科研社成立於1996年，是香港主要民間天文機構之一，提供活動、器材及技術服務。星河科研社設有圓頂天文台、立體星象館，每年為逾萬人提供各項星空體驗活動及課程，為多個國際天文品牌的地區總代理，進出口批發零售各類天文器材，客戶遍及世界多國，又為東亞地區多個政府、學校、私人機構等建設天文館、天文台及教學設施。

Established since 1996, Galaxy Scientific Group has been actively serving the government, institutes, and individuals by providing astronomy programs, support, technical consultation, and infrastructure building services. With premium expertise, observatory, and planetarium facilities, we aspire to ignite the general public's appreciation for the unknown world and, in turn, to foster a better understanding of life as a whole.



星河科研社火炭工作室
Galaxy Scientific Group Fo Tan Studio



立體星象館
STARLAB Planetarium

教育服務

Education Services

星河科研社致力為中小學、幼稚園、社區組織等提供全面教育支援，迎接香港教育新時代。服務包括推行優質教育基金計劃、提供校本課程及活動班、舉辦開放日及嘉年華等。

Galaxy Scientific Group is dedicated to providing comprehensive educational support for primary and secondary schools, kindergartens, and community organizations, welcoming the new era of education in Hong Kong. Our services include implementing Quality Education Fund projects, providing school-based curriculum and activity classes, as well as organizing open days and carnivals.



為澳門浸信中學開辦高中兩年制天文選修科，接受文理科學生修讀
Astronomy curriculum designed for Macau Baptist College



港島民生院書天文學會星象館到校體驗活動
STARLAB program for Munsang College (Hong Kong Island)



港島民生院書天文學會星象館到校體驗活動
STARLAB program for Munsang College (Hong Kong Island)



到校天文活動班
Astronomy courses for schools



小學常識科支援
Primary school General Studies supports



中小學及幼稚園到校天文課程、體驗活動、郊外觀星實習
Astronomy courses and programs for kindergartens, primary and secondary schools





立體星象館到校服務
STARLAB program for schools



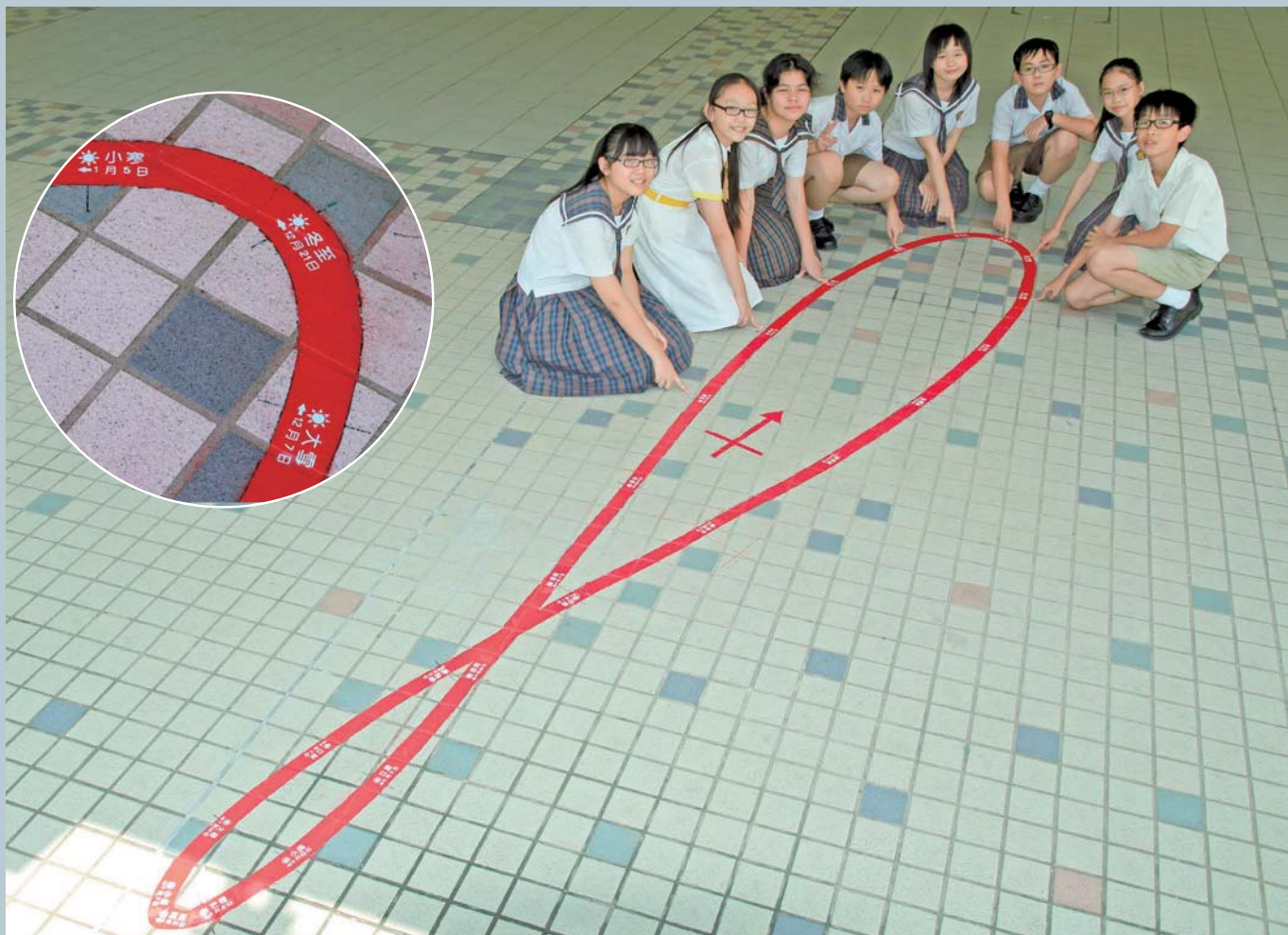
童軍天象專章訓練班
Scout Astronomy Badge Training Course



兒童科學營
Science camp for kids



天文服務生培訓
Astronomy ambassador trainings



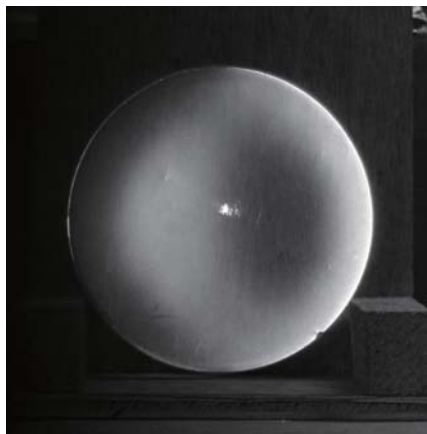
由星河科研社設計，與可銘學校師生協作，投入超過一年半時間繪製而成並標註廿四節氣的香港首條日行跡
The first analemma drawn in Hong Kong with Chinese 24 Solar Terms for Ho Ming Primary School.



學生自製鏡拍攝的奧米加星團
Omega Centauri globular cluster imaged through self-made telescope by students



學生自製望遠鏡拍攝的月面大特寫
Lunar closeup imaged through self-made telescope by students



刀口儀下的拋物面型態
Parabolic surface under knife edge tester



澳門政府資助推行中學磨製望遠鏡課程
Telescope making class in Macau sponsored by the government

天文望遠鏡製作課程：現今青少年成長於物質豐富的年代，但往往缺乏參與建立的過程。從兩片玻璃開始，數十小時的磨製、拋光、檢測、修正，到最後組裝成一台可工作的天文望遠鏡，學到光學及技術上的知識，也學懂付出與收穫，以及惜珍身邊的事物。

多年來，星河科研社不時會與夥伴學校及團體推行有關活動，對象由家庭、高小至高中學生不等。

Telescope making classes : Nowadays, young people are growing up in a materially abundant era, but often lack the experience of participating in the process of creation. From starting with two pieces of glass, going through dozens of hours of grinding, polishing, testing, and figuring, to eventually assembling a functional astronomical telescope, students learn not only optical and technical knowledge, but also the lessons of dedication and reaping the rewards, as well as cherishing the things around them.

Over the years, the Galaxy Scientific Group has regularly organized related activities with partner schools and groups, targeting audiences ranging from families to primary and secondary school students.

主題活動

Themed Programs



寶礦力夢想結集啟動禮
STARLAB show for Pocari Sweat



幼稚園星空體驗嘉年華
Kindergarten Space themed carnival

單單到大自然中仰望星空並不足以了解天文學。大多數時候我們需要特殊裝備和經驗來策劃一次完美的戶外活動。為此，我們為不同的參與群體提供度身定制的活動，最大限度地滿足他們的期望。我們的服務涵蓋工作坊、嘉年華、露營過夜到戶外考察等，服務對象涵蓋從兒童到成人的各個年齡段。

Simply going to nature and gazing up at the starry sky is not enough to understand astronomy. Most of the time, we need special equipment and experience to organize a perfect outing. In light of this, we offer customized programs for different participating groups to best meet their expectations. Our programs range from workshops to carnivals, overnight camps to excursions, and we serve a diverse age group from children to adults.



馬來西亞國家石油公司科學中心數碼立體星象館培訓
STARLAB training to Petronas Science Centre, Malaysia



連續三年提供恒生銀行嘉年華星空主題活動
Supporting Hang Seng Bank carnival



與明報集團合辦青少年天文證書課程
Astronomy certificate course with MingPao



時代廣場「周麗淇帶你漫遊星空」數碼立體星象館啟用禮
STARLAB show at Time Square



童軍白鷺湖觀星營
Lake Egret stargazing camp for Scout



白鷺湖天文台親子活動
Family event at Lake Egret Observatory



數碼立體星象館參與數碼港小小伽利略天文科學日
STARLAB presented in science day in Cyberport



數碼立體星象館參與西九中國航天展及太空探秘
STARLAB presented in Aerospace expo in West Kowloon



數碼立體星象館台灣巡迴教師工作坊
STARLAB teacher workshop in Taiwan



海洋公園中秋嘉年華
Ocean Park Moon Gazing Night Carnival



海洋公園星空探索科學營
Ocean Park Space Exploration Camp



暑期天文科學營
Summer iAstronomer Camp

旅遊服務

Travel Services

星蹤行 (西藏之旅)：行萬里路，可以增廣見聞，更可以一睹已遠離香港城市人生活，難得一見的極致星空美境。西藏可謂東亞地區最後一片天文淨土，為不少天文人朝聖之地。

星河科研社於西藏中科院國家天文台基地建立的天文觀測站，除可從香港遠程控制進行天文觀測及支援教育工作外，自 2011 年以來已在站上接待不少各地訪客。

Traveling miles can broaden horizons and allow a glimpse of pristine starry skies far from Hong Kong's city life. Tibet is considered East Asia's last astronomical haven, a pilgrimage site for astronomers. The observatory established by Galaxy Scientific Group at China's National Astronomical Observatories base enables remote observations and education from Hong Kong, welcoming many visitors since 2011. After the pandemic, Tibet stargazing and astrophotography trips along different routes for participants of all ages have been resumed.



西藏納木錯今人神往
Mesmerizing view at Namtso, Tibet



西藏觀星攝星團與珠穆朗瑪峰合攝
Tibet stargazing and astrophotography tour group photo with Mt Everest



中國科學院國家天文台西藏羊八井站，現時設有多台 50 及 40 公分口徑望遠鏡
Observation site at Yangbajing, Tibet



保良局陳守仁小學 2017 美國日全食天文遊學團
Po Leung Kuk Camões Tan Siu Lin Primary School
2017 Great American eclipse study tour



2012 年金星凌日期間，香港、西藏、德國、北京、台灣的天文專家及愛好者及於西藏觀測站聚首一堂
2012 Venus transit observed in Tibet with professionals and enthusiasts from Hong Kong, Tibet, Germany, Beijing and Taiwan



香港大學天文學會西藏之旅
HKU Astronomy Society Tibet tour

境外天文考察旅程: 在香港這繁華大都會，璀璨爛星空已漸遠離，不再是青少年成長的一部份……

星河科研社多年來舉辦不同的天文攝影、考察、交流團等，足跡遍及台灣、華東、西藏、紐西蘭、美國等，成為參加者學習生涯中難忘的一頁。

Astronomy expedition travel: In the bustling metropolis of Hong Kong, the brilliant starry sky is gradually fading away, no longer a part of the growth of young people...

Over the years, the Galaxy Scientific Group has organized various astronomy photography, exploration, and exchange tours, with footprints across Taiwan, Eastern China, Tibet, New Zealand, the United States, and more, becoming an unforgettable page in the learning journey of participants.



2013 年 12 月西藏星空派對
2013 Star Party in Tibet



中小學師生華東天文學習團
Teachers & students eastern China astronomy study tour



保良局陳守仁小學天文考察團，拜訪台灣鹿林天文台當地最大口徑望遠鏡，又登上 3275 米海拔拍攝星空
Po Leung Kuk Camões Tan Siu Lin Primary School astronomy expedition team visited the Lulin Observatory in Taiwan, where they saw the Taiwan's largest telescope on site, and then ascended to an altitude of 3,275 meters to photograph the starry sky





阿拉斯加賞極光之旅
Trip for Aurora in Alaska



保良局陳守仁小學紐西蘭天文遊學團，於特卡波湖拍攝銀河、大、小麥哲倫雲及極光
The Po Leung Kuk Camões Tan Siu Lin Primary School astronomy study tour in New Zealand took photographs of the Milky Way, the Large Magellanic Cloud, the Small Magellanic Cloud, and the aurora at Lake Tekapo



阿拉斯加賞極光之旅
Trip for Aurora in Alaska



皇后鎮蒸汽船旅程
Queenstown Steamboat Cruise

教育設施

Education Facilities

香港天文觀測設施：星河科研社為香港不同學校組建的各式各樣天文台及望遠鏡系統。

Small astronomical observatories in HK built by Galaxy Scientific Group.



可銘學校 3.5 米天文台及 20 公分折射鏡
Ho Ming Primary school 3.5m observatory & 20cm refractor



元朗寶覺小學 2.3 米天文台及 15 公分折射鏡
Yuen Long Po Kok Primary School 2.3m observatory & 15cm refractor



鳳溪創新小學 2.3 米天文台及 25 公分反射鏡
Fung Kai Innovative School 2.3m observatory & 25cm reflector



置富始南小學 2.3 米天文台及 25 公分反射鏡
Chi Fu Chi Nam Primary School 2.3m observatory & 25cm reflector



基慈小學 2.3 米天文台及 13 公分折射鏡
Kei Tsz School 2.3m observatory & 13cm APO refractor



佛教榮茵小學 2.3 米天文台及 20 公分反射鏡
Buddhist Wing Yan School 2.3m observatory & 20cm reflector

小型及流動天文館：STARLAB / STAR ACADEMY 流動立體星象館及室內固定式天文館為天文體驗及教育利器。星河科研社提供全面投影系統、全天域電影、結構工程及施工方案。除香港及內地多所院校外，用戶包括北京天文館、台灣淡江大學及自然科學博物館、星加坡科學館、馬來西亞國家天文館、國家石油公司科學中心、馬來西亞理科學大學及泰國 Merck Science Institute 等。

Galaxy Scientific Group offers small fixed and mobile planetariums for astronomy education, with projection system, full-dome movies, and engineering solutions. Clients include Beijing Planetarium, Tamkang University and Museum of Natural Science in Taiwan, the Singapore Science Center, the National Planetarium of Malaysia, the Malaysia Petrosains Discovery Center, Universiti Sains Malaysia, and the Merck Science Institute in Thailand, among others.



自 2003 年星河科研社引入香港首套立體星象館至今，每年接待逾萬人次體驗星空
Since 2003, Galaxy Scientific Group's mobile planetarium in Hong Kong has welcomed over 10,000 visitors yearly to experience the night sky



匯基書院（東九龍）天文館，採用數碼立體星象館投影系統，投影室由夥伴註冊結構工程師設計及批核
The United Christian College (Kowloon East) planetarium, with the projection room designed and approved by partner registered structural engineers

星河科研社亦設計及供應各式各樣教學設施，滿足天文教學不同需要：

Other local astronomical facilities built by Galaxy Scientific Group:



為浸信會沙田圍呂明才小學、澳門蔡高中學、鳳溪創新小學及可銘學校建造的地平式及赤道式日晷
Sundials built for different schools in Hong Kong and Macau



為佛教黃焯菴小學建造星空隧道和供應望遠鏡器材
Star kaleidoscope built & telescope systems supplied to Buddhist Wong Cheuk Um Primary School



可銘學校天文教室太陽系模型
Ho Ming primary school Astronomy Classroom solar system model



為可銘學校天文教室供應多項設施，部份附設校本課程，融入常識科課主題
Astronomy teaching aids for Ho Ming Primary schools



為置富始南小學製作的廿四節氣及賞月閣壁畫，又建造香港首條星空隧道，融合東西方古星空文化
The 24 Solar Term & Moon murals, as well as Hong Kong's first Star kaleidoscope for Chi Fu Chi Nam Primary School, integrating Eastern and Western ancient star culture



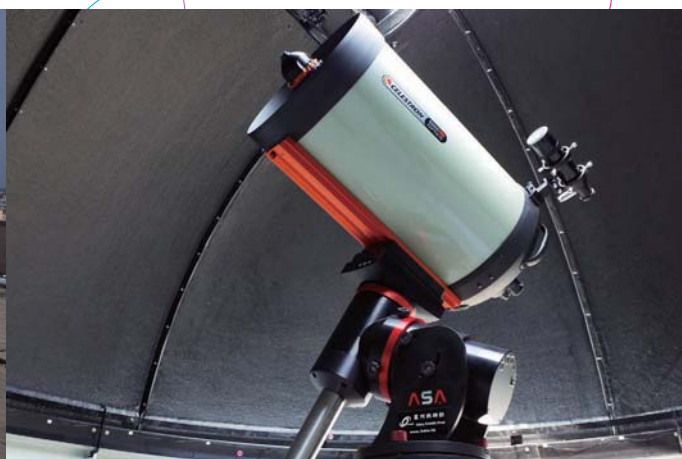
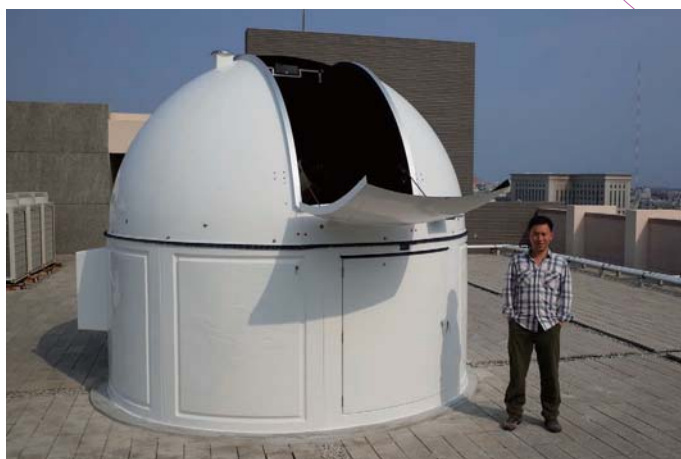
馬來西亞第二大的 20 公分口徑 APO 折射鏡
20cm APO refractor being the 2nd largest in Malaysia



馬來西亞檳城科學中心的 0.4 米口徑望遠鏡
40cm telescope for Penang Tech Dome Observatory, Malaysia



澳門浸信中學 3 米天文台及 15 公分口徑 APO 折射鏡
Macau Baptist College 3m observatory & 15cm APO refractor



2012-14 年間為台灣大學及自然科學博物館承造墾丁、綠島、馬祖、澎湖、金門、蘭嶼的天文台項目
From 2012-2014, astronomical observatories were built in Taiwan and on outlying islands for Taiwan University and the Museum of Natural Science

專業服務

Professional Services

天文觀測設施：天文台為推動天文教育工作的重點設施，星河科研社多年來為亞洲區內多所學校、機構及個人組建各式各樣的天文台、供應全套望遠鏡及自動化系統，又夥伴工程師及建築師團隊，提供全面的技術及服務方案。

2010年，星河科研社獲台灣大學邀請，於西藏阿里西陲5100米海拔觀測點，承建全球最高海拔天文台之一。該處的嚴峻環境，對執行人員、器材、施工過程都帶來極大考驗，換來的是無可取代的項目經驗。

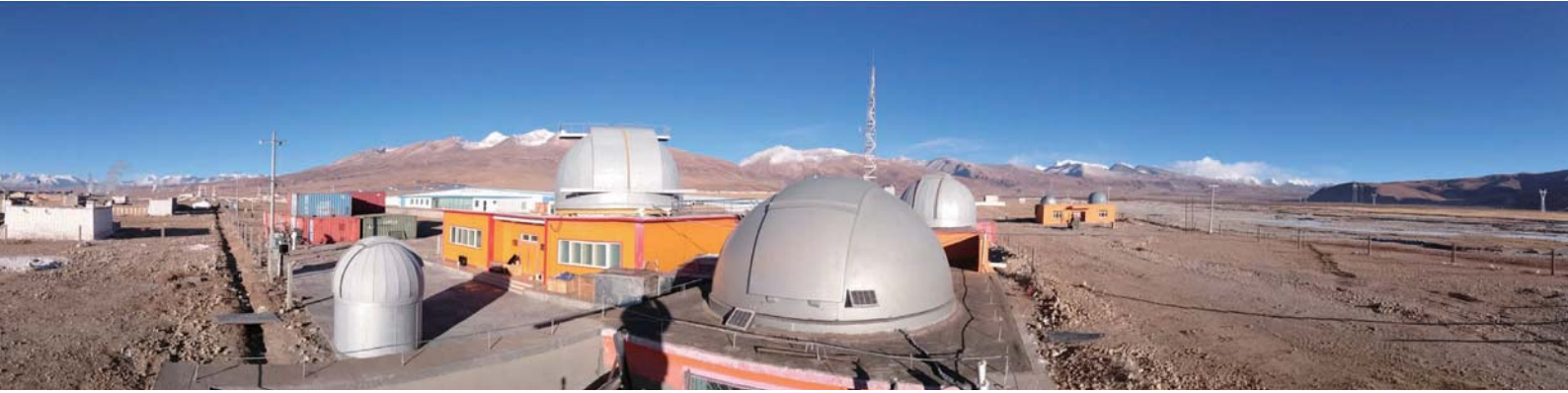
Astronomical Observatories: Astronomical observatories are key facilities for promoting astronomy education. Over the years, Galaxy Scientific Group has built various types of observatories and supplied complete telescope systems and automation systems for many schools, institutions, and individuals across Asia.

Our team of partnering engineers and architects provide comprehensive technical solutions and services. In 2010, Galaxy Scientific Group was invited by Taiwan University to build one of the world's highest astronomical observatories, located at a 5,100-meter elevation site in westernmost Tibet. The harsh environmental conditions posed significant challenges for the personnel, equipment, and construction process, but this project experience was invaluable.



位於西藏阿里西陲的建台址，離喀什米爾邊境僅80公里，需從拉薩開車兩天1800公里前往

The observatory site is located in westernmost Tibet, just 80 kilometers from the Kashmir border. It requires a 1,800 kilometer, two-day drive from Lhasa to reach



西藏羊八井中科院國家天文台全境，位於 4300 米海拔的站上已建有六個天文台，另有更多在籌劃中。照片下方為星河科研社自資建立的全自動化天文觀測站，遠方背景為念青唐古拉山，山後是聖湖納木錯

The Yangbajing site is located at 4,300 meters, with 6 observatories constructed and more planned. The photo shows the robotic observatory established by Galaxy Scientific Group, with the Nyenchen Tanglha Mountains in the background and Lake Namtso behind

西藏天文觀測設施：西藏具備得天獨厚的天文觀測條件，隨中國投入科研資源逐步增加及當地公路網絡等配套漸完善，不少國內外科研機構開始籌劃建立高原天文觀測站。

繼 2010 年星河科研社為台灣大學於西藏西陲阿里地區 5100 海拔建立了首個天文觀測站後，隨後又承造包括國家天文台的不同項目，目前重點台址羊八井已初具規模。

Astronomical Observatories in Tibet: Tibet possesses exceptional conditions for astronomical observation. As China has been increasing investment in scientific research and the local infrastructure has improved, many domestic and international research institutions have started planning high-altitude observatories in the region.

After building the first observatory at 5,100 meters in westernmost Tibet for Taiwan University in 2010, Galaxy Scientific Group has undertaken various other projects, including for the National Astronomical Observatories. The key Yangbajing site is now taking shape.



星河科研社於站上最新完成的三個天文台項目，均設有由 40 至 50 公分口徑望遠鏡，可從北京國家天文台總部、台灣大學或其他海外地點，作遠程控制或自動化觀測。

The 3 most recent astronomical observatories completed by Galaxy Scientific Group on site each equipped with 40 to 50cm telescopes, which can be remotely controlled or automated for observation from the headquarters of the National Astronomical Observatories in Beijing, Taiwan University, or other overseas locations.

香港天文觀測設施：

星河科研社參與不少香港近年落成的大型天文設施，提供全面方案，包括選購器材、組裝、長期維護及升級技術等。

Hong Kong Astronomical Facilities:

Galaxy Scientific Group has been involved in the construction of several large-scale astronomical facilities in Hong Kong in recent years, providing comprehensive solutions including equipment selection, system integration, long-term maintenance, and upgrade technologies.



保良局顏寶鈴書院 5 米天文台，內置全港最大 23 公分口徑 APO 折射式望遠鏡
PLK Ngan Po Ling College 5m observatory & 23cm APO refractor, the largest in Hong Kong



供應給香港城市大學的 6.7 米天文台組件
City University 6.7m observatory panels



為新鴻基馬灣太陽館建造的香港最大天文台，設有全東南亞最大民用真空太陽望遠鏡
Designed & built the largest astronomical observatory in Hong Kong for the Sun Hung Kai Ma Wan Solar Tower, which houses the largest non-governmental solar vacuum telescope in Southeast Asia



星河科研社為浸信會沙田圍呂明才小學策劃及興建，香港首個數碼天文館。整座建築有多方專家參與，混凝土結構投影天幕直徑 8.5 米
Galaxy Scientific Group designed and constructed the first non-governmental planetarium in Hong Kong for the Baptist Sha Tin Wai Lui Ming Choi Primary School. The concrete structure features a projection dome with a diameter of 8.5 meters. Multiple experts were involved in the project

天文館：天文館為重點的天文教育設施，在不同主題教學活動、嘉年華中極受歡迎，自星河科研社於2003年引進首套STARLAB立體星象館以來，不斷為香港及亞洲區內不同學校及機構供應相關系統及建立天文館，至今已成為天文教育的新標準設施。

Planetariums are key educational facilities, highly popular in various teaching activities and carnivals. Since Galaxy Scientific Group first introduced the STARLAB planetarium system to Hong Kong in 2003, Planetariums have been continuously established, and related systems have been supplied for different schools and institutions in Hong Kong and the broader Asian region by the company. These facilities have now become the new standard for astronomical education.



天文館由策劃、設計、建造至安裝設備，處理了複雜的地政及工程問題，項目歷時 5 年完成
From planning to construction to equipment installation, the planetarium project involved handling complex land use and engineering challenges and was completed over 5 years



天文館可模擬全天空星象，播放天文主題及常規電影
The planetarium can simulate the all-sky starry scene and astronomy themed shows, as well as regular films



為仁濟醫院陳耀星小學開發的香港首個負氣壓天幕天文電影院
The first negative pressure dome planetarium in Hong Kong, for Chan Lu Seng Primary School

技術開發

Technical Developments



星河科研社聯合德國及奧地利團隊，為中科院雲南基地建造的兩台 0.8 米口徑 $f/2.2$ 主焦廣域巡天望遠鏡
Two 0.8 meter $f/2.2$ wide field telescopes for Chinese Academy of Sciences at Yunnan base, co-developed and built by Germany & Austria engineering team and Galaxy Scientific Group



與中國內地合作開發的數十台科研用大口徑望遠鏡台架及圓頂控制系統
Science research application large aperture telescope mount and dome control systems co-developed with China inland



為新疆天文台建造的 2 套 0.6 米月閃觀測望遠鏡
2 sets of 0.6-meter Transient Lunar Phenomena observation telescopes designed and built for the Xinjiang Astronomical Observatory



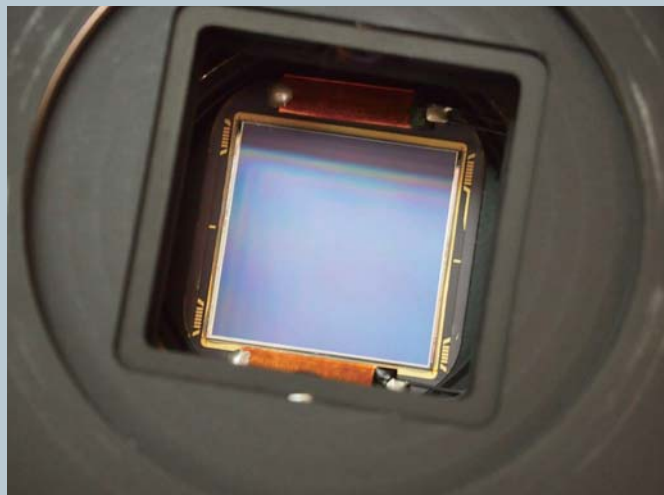
為新鴻基馬灣太陽塔建造天文圓頂、開發高端追蹤系統及升級望遠鏡成像裝置
Observatory dome, advanced tracking system built and optical enhancement for SHK Ma Wan Solar Tower



為紫金山天文台雲南基地建造的 0.8 米口徑 f/10 RC 望遠鏡
0.8m f/10 RC telescope built for Yunnan station of Purple Mountain Observatory



為深圳西涌天文台開發的自動化平台
Automation platform developed for ShenZhen XiChong Observatory



為紫金山天文台批量開發的高效冷凍 CCD 相機
High QE cooled CCD cameras built for Purple Mountain Observatory



為中國科學院河北基地開發的 0.6 米口徑 f/2.15 大像場直焦望遠鏡
0.6m f/2.15 Prime focus reflector telescope designed and built for Hebei station, Chinese Academy of Sciences.



為中國科學院巡天項目中的廣域望遠鏡陣批量採購
的高效直驅赤道儀
High performance direct drive equatorial mounts for the sky surveying project of Chinese Academy of Sciences

器材服務

Equipment Services

天文器材服務：天文學的普及令更多個人或團體希望擁有天文儀器。星河科研社作為地區總代理，致力為遍及中國內地、香港、台灣、東南亞、韓國、日本、澳紐、印度、中東、歐洲及非洲等用戶，提供優質選項。

Astronomical Equipment Services: The popularization of astronomy has led more individuals and groups to desire astronomical equipment. Galaxy Scientific Group, as the regional distributor, provides premium options to customers across China inland, Hong Kong, Taiwan, Southeast Asia, South Korea, Japan, Australia, New Zealand, India, the Middle East, Europe, and Africa.



為兩位騰訊控股創辦人設計及建造，全球最大口徑 304 f7.5 APO 雙筒折射鏡
Designed and constructed for the two co-founders of Tencent Holdings, the world's largest 304mm f/7.5 APO binocular telescopes



星河科研社每年零售批發及進出口多個貨櫃數以十噸計天文儀器。圖中為當時區內最大口徑的 20、23、25 公分口徑 APO 折射鏡，最後落戶香港、北京、日本及馬來西亞

APO refractors supplied by Galaxy Scientific Group, among the largest in Asia Pacific region



供應韓國用戶 23 公分口徑 Ha 光譜太陽望遠鏡
23cm aperture solar telescope for Korean user



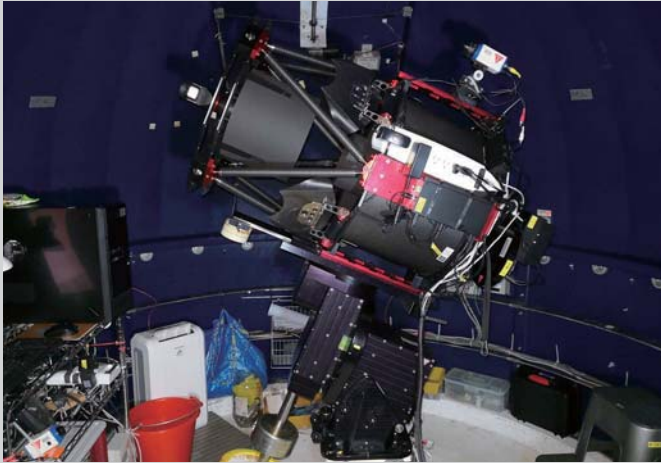
紫金山天文台 0.7 米口徑 RC 望遠鏡
0.7m aperture RC telescope for Purple Mountain Observatory



西藏大學 0.8 米口徑 RC 望遠鏡
0.8m aperture RC telescope for Tibet University



紫金山天文台盱眙觀測站 0.4 米口徑望遠鏡
0.4m aperture telescope for Xuyi station of Purple Mountain Observatory.



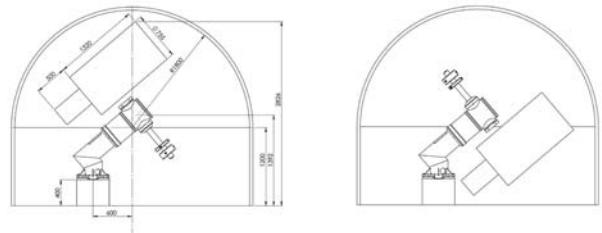
台灣中央大學鹿林天文台 0.4 米口徑大像場望遠鏡
0.4 meter aperture wide field telescope for Lulin Observatory, Central University of Taiwan



台灣大學墾丁天文台 0.3 米口徑 f/3 大像場望遠鏡
0.3m and 0.5m aperture telescope projects for China National Observatories



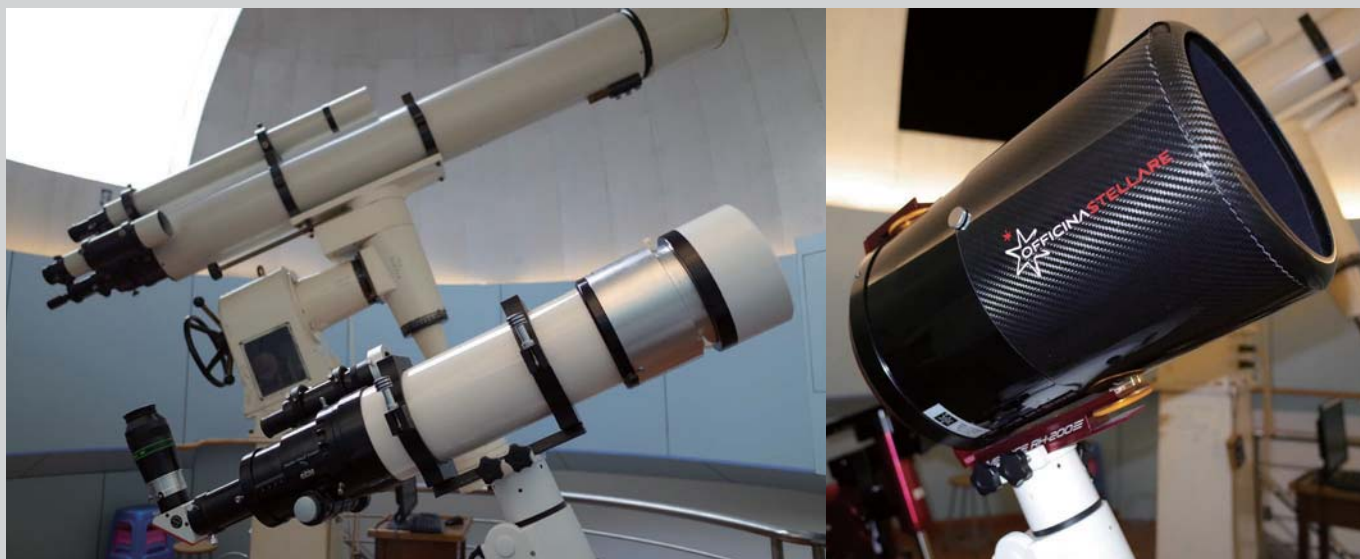
中山大學 0.4 米口徑 RC 望遠鏡及 0.2 米口徑 RH 攝星儀
0.4m aperture RC telescope & 0.2m aperture RH astrographs for Sun Yat-sen University



中國國家天文台 0.3 米及 0.5 米口徑望遠鏡天文台項目
0.3m and 0.5m aperture telescope projects for China National Observatory



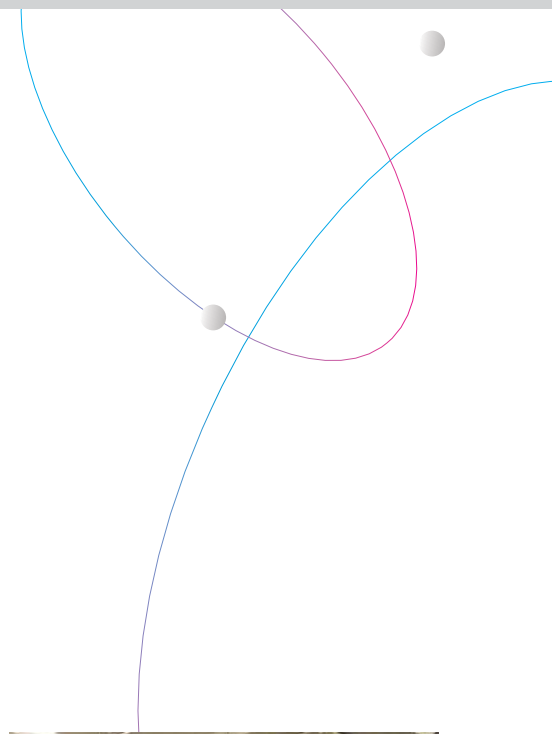
中國科學院 0.5 米口徑通訊望遠鏡
0.5m aperture communication telescope for Chinese Academy of Sciences



為廣東碧桂園學校天文台提供的一系列器材
Observatory equipment for GuangDong Country Garden School



位於檳城，設有馬來西亞第三大 15 公分 APO 折射鏡的小學天文台
15cm APO refractor for Primary school observatory, 3rd largest in Malaysia



深圳私人流動天文拖卡
Private mobile observatory of Shenzhen enthusiast

各式各樣天文器材，滿足科研、教育及愛好者不同需要：

Showcase of astronomical setups across the region, satisfying the diverse needs of researchers, educators, and enthusiasts:



馬來西亞最大口徑 23 公分 APO 折射鏡
23cm APO refractor, the largest in Malaysia



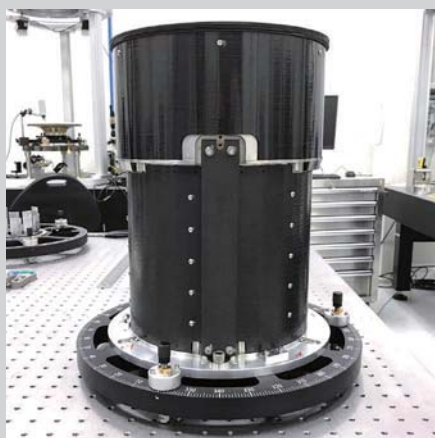
馬來西亞浮羅交怡國家天文台 0.5 米口徑望遠鏡
0.5m aperture telescope for Langkawi National Observatory, Malaysia



印尼國家航天研究所 (LAPAN) 天文圓頂及兩台 0.5 米口徑望遠鏡
Observatory dome with two 0.5 meter telescopes for Indonesia Space agency (LAPAN)



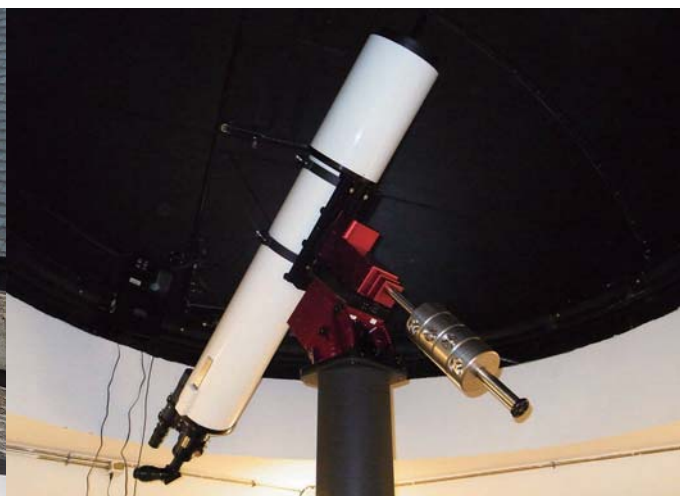
印尼蘇門答臘理工學院 0.7 米 RC 望遠鏡廠內測試
Factory testing the 0.7m aperture telescope for Sumatera Institute of Technology, Indonesia



為印尼國家航天所 (LAPAN) 開發的 180 f/3.3 太陽同步軌道人造衛星負載望遠鏡
180 f/3.3 Sun-synchronous satellite payload telescope designed and built for the Indonesia Space Agency (LAPAN)



北京家居天文台全國最大口徑 25 公分 APO 折射鏡（截至 2010 年）
Private observatory & 25cm APO refractor in Beijing, the largest in China (as of 2010)



保良局顏寶鈴書院太陽觀測用全球最大 16 公分振腔濾鏡
16cm clear aperture, the world's largest etalon for solar observation, of PLK
Ngan Po Ling College (as of 2010)



香港西貢白普里營天文台自動化赤道儀
Automated equatorial mount in Bradbury camp Sai Kung



香港家居天文台及 13 公分 APO 折射鏡
Private observatory & 13cm APO refractor in HK

數據服務

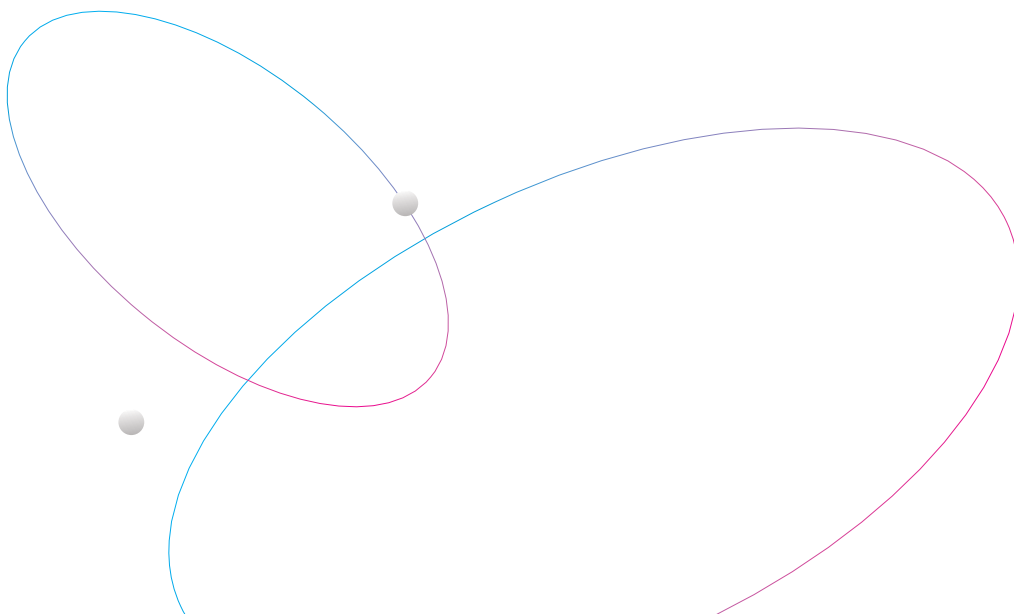


Data Services



星河科研社正逐步組建環球觀測網絡，設置最大口徑至 1 米天文望遠鏡，為個人、教育及科研機構客戶提供天文數據服務

Galaxy Scientific Group is gradually setting up a global observation network with up to 1-meter aperture telescope, to provide astronomical data services to individuals, educational and research institutions



技術交流

Technical Exchange

技術交流研討：星河科研社亦出席不少地方或國際的天文技術論壇和研討會學習和交流心得。

Galaxy Scientific Group participates many local and international technical forums and symposiums, to learn and share pioneering astronomical technologies and sciences, also to promote related education to nurture future engineers and scientists.



星河科研社代表香港參加海峽兩岸天文望遠鏡與觀測前沿技術研討會

Galaxy Scientific Group representatives participated in the China mainland & Taiwan Cross-Strait Astronomical Telescope and Frontier Observation Technology Conference

STEAM: 除了參加學術和技術研討外，星河科研社亦致力推動教育工作。有感近年全球性的科研、工程人材不足，星河科研社積極參加STEAM (Science, Technology, Engineering, Art, Mathematics) 的教學交流，分享經驗，期望在人材培育方面出一分力。

STEAM: In addition to participating in academic and technical conferences, Galaxy Scientific Group is also committed to promoting educational work. Feeling the global shortage of talent in scientific research and engineering in recent years, Galaxy Scientific Group actively participates in STEAM (Science, Technology, Engineering, Art, Mathematics) teaching exchanges, sharing experiences, and hoping to contribute to talent cultivation.



星河科研社參與東盟天文聯網研討會
Participated the South East Asia Astronomical Network Symposium



於印尼國家航天所 (LAPAN) 作技術報告
Technical presentation at LAPAN, the Indonesia Space Agency



星河科研社與西藏大學學生交流
Astronomy seminar for students of Tibet University



星河科研社長年為香港資優教育學院舉辦天文學課程、組織遊學團，亦參與由資優教育學院舉辦的 STEM 會議
Long term provider of astronomy courses & study tours for HK Academy of Gifted Education & participated STEM conference

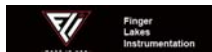
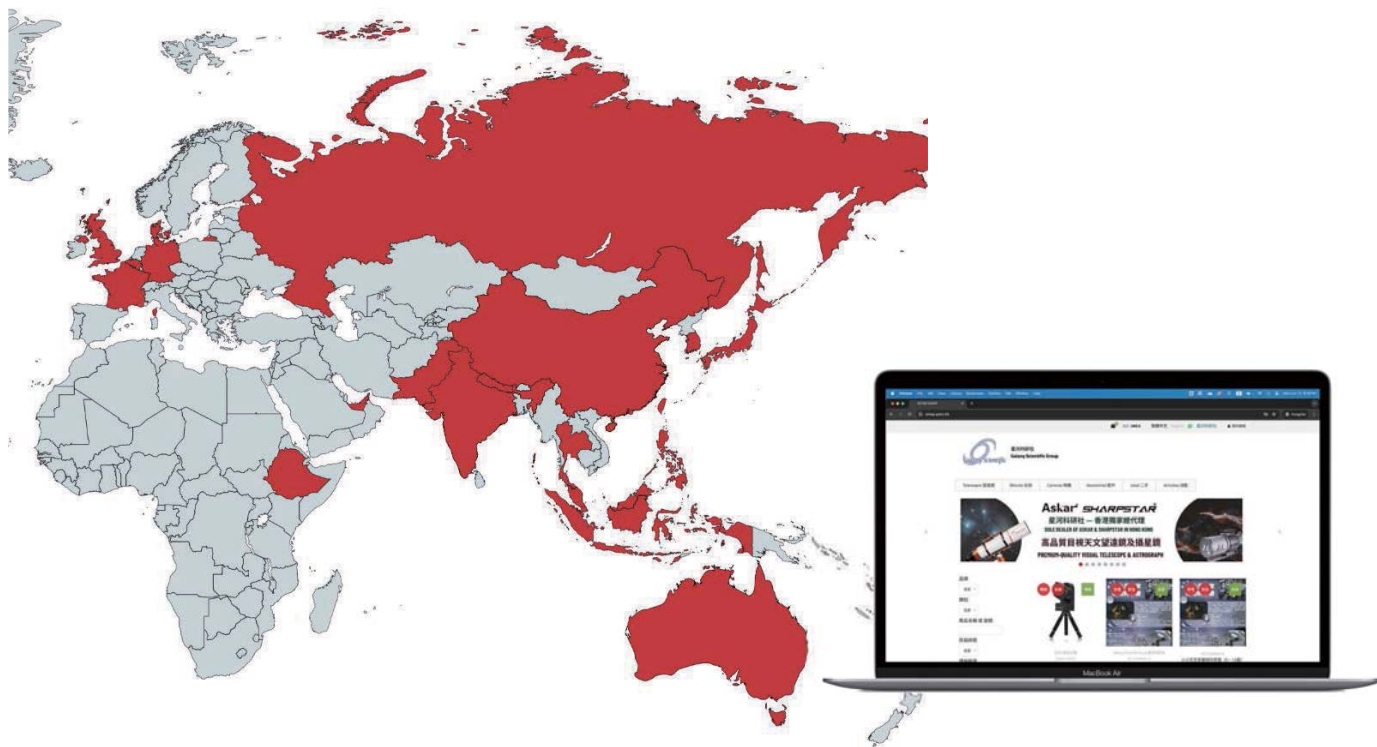
代理品牌

Distributed Brands

eshop.astro.hk

星河科研社為多個不同天文儀器品牌的代理或零售商，確保客戶能選購到最合適及心儀的天文儀器。由入門級望遠鏡，到科研用天文器材，種類繁多一應俱全，eshop.astro.hk 上架 1 年已暢銷至香港及海外超過 20 個國家與地區。

Galaxy Scientific Group is the dealer and distributor of many famous world-class brands in the Asia region, serving customers from over 20 countries and territories just 1 year after the launch of eshop.astro.hk



星空小聚

Astrocafe

星空的探索是永無休止的，普及天文學能幫助我們了解自身與大自然的關係，鼓勵思考的突破。訂閱星河科研社 Whatsapp 頻道可以獲得更多活動及器材相關資訊，並與志同道合的朋友分享交流。

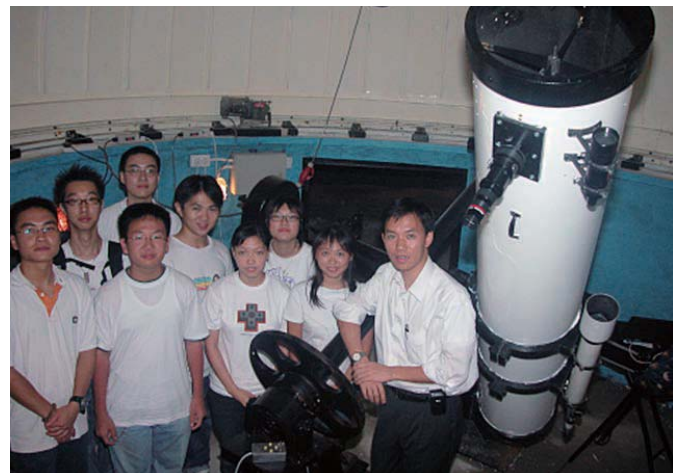
The exploration of the starry sky is endless. Popularizing astronomy can help us understand our relationship with nature and encourage breakthrough thinking. Subscribing to Galaxy Scientific Group Whatsapp channel for more information about activities and updates, and allows to share and exchange with like-minded friends.



Whatsapp 頻道
Whatsapp Channel



火炭工作室天文工作坊
Astronomy workshop at Fo Tan studio



白鷺湖天文台觀星及天文攝影實習
Lake Egret Observatory stargazing & astrophotography workshop



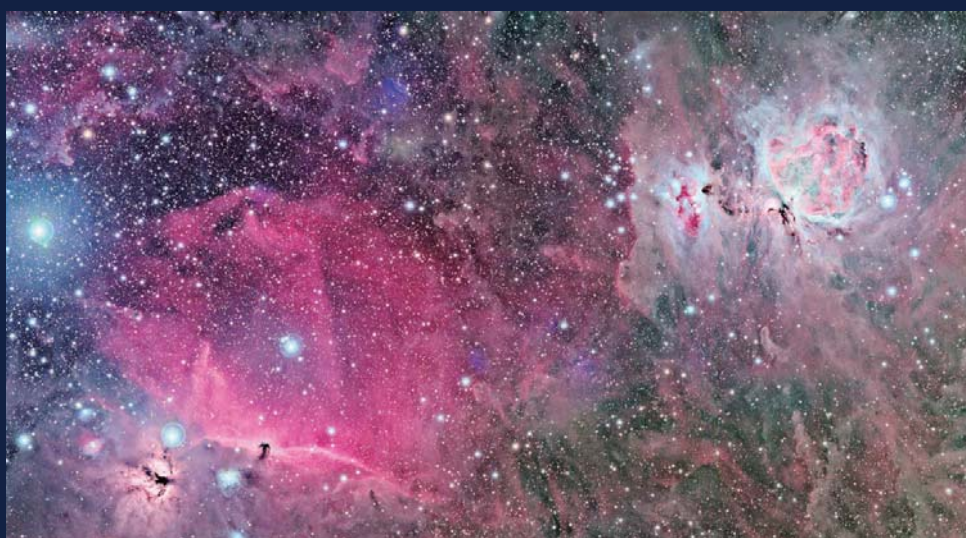
新界西天文基地觀星實習
Stargazing at New Territories West Astronomy Base



服務參考

Partners & Customers

新鴻基地產(馬灣太陽館天文台)・聖雅各福群會・香港女童軍總會・喇沙小學・真光中學小學部・香港航天學會・
 保良局顏寶鈴書院・玩具反斗城・台灣自然科學博物館・瑪利曼小學・佛教黃焯菴小學・拔萃小學・
 聖公會置富始南小學・上海國際學校・荃灣區議會・嘉諾撒小學・泰國 Merck Science Institute・威爾斯親王醫院・
 黃金海岸酒店・中華基督會方潤華中學・Hong Kong International School・樂基幼兒學校・上海商業銀行・
 恒生銀行・可銘學校・新鴻基地產(康業)・明報集團・教育出版社・優兒學會(QQ Club)・音樂農莊・
 香港中文大學・保良局陳守仁小學・深灣遊艇會・嘉華地產・北京天文館・怡和集團・印尼國家航天研究所・
 時代廣場・蘋果日報・社會福利署・香港警務處・嘉里集團・仁濟醫院・志蓮護理安老院・中國紫金山天文台・
 大新銀行・香港教育學院・馬來西亞國家天文館・飛利浦・寶覺分校・協康會・東華三院・鳳溪創新小學・
 匯豐幼兒中心・香港資優教育學苑・中國國家天文台(西藏天文觀測站)・保良局圓玄小學・錦繡花園・
 Science Center Singapore・可觀自然教育中心・碧堤半島・香港城市大學・香港童軍總會・
 中國科學院新疆天文台・明愛陳震夏郊野學園・中華基督教會基慈小學・香港體育學院・教世軍・港島民生書院・
 香港海關・星展銀行・台灣大學(西藏阿里天文台)・獅子會・Dow Chemical・小童群益會・鄉村俱樂部・
 澳門地球物理氣象局・香港專業教育學院・澳門浸信中學・Magazine International・上海光學精密機械研究所・
 深圳西涌天文台・馬來西亞國家石油公司科學中心・臻美幼稚園・蔡高中學・香港天文台・聖公會幼稚園・
 聖保羅書院・聖士提反女子中學・香港科學儀器社・黃埔花園・佛教榮茵小學・黃金海岸商場・伊利沙伯中學・
 澳門濠江扶輪青年服務團・匯基書院東九龍・Manipur University India・馬來西亞理科學大學・YMCA・
 Science Workshop・浸信會沙田圍呂明才小學・美孚石油・香港賽馬會・淡江大學・匯豐體育會・
 基督教香港信義會・培正中學・德信中學・可藝中學・香港基督服務處・中山大學・雲景臺・
 香港青年協會賽馬會西貢戶外訓練營・漢基國際學校・香港科技大學・耀中幼稚園・偉倫小學・孫方中小學・
 劉皇發夫人小學・香港學生輔助會小學・馬來西亞國家天文台・台灣中央大學・台灣鹿林天文台・
 西藏大學・香港挪亞方舟・香港海洋公園・基督教香港信義會宏信書院・中國科學院上海光學精密機械研究所・
 香港恒生大學・天主教伍華小學・香港中國婦女會中學・培基書院・聖芳濟各書院・宣道會鄭榮之中學・協和小學・
 三育幼稚園・樹宏學校・鄧英業小學・何式南小學・仁濟醫院陳耀星小學・伯特利中學・基道小學・大埔救世軍・
 德雅中學・基督教培恩小學・馬鞍山信義學校・保良局蔡繼有學校・浸信會天虹小學・沙頭角中心小學・
 龍門會所・佛教林炳炎小學・揚海會所・香港聾人福利會・栢傲灣會所・仁濟醫院靚次伯紀念中學・大埔超級城・
 元朗天主教中學・東華三院高可寧念小學・趙聿修紀念中學・浸信會呂明才書院・真道書院・YMCA葵盛會所・
 聖母書院・YMCA 九龍會所・大埔卮慈中學・廠商會蔡章閣中學・聖安德肋小學・聖公會基孝中學・蔡衍濤小學・
 崇真天主教學校・合一堂小學・聖公會基顯小學・麗城綜合青少年服務中心・福建中學附屬學校・
 路德會增城兆霖學校・董之英中學



M81、M82 星系及共耀星雲
M81, M82 Galaxies & Integrated Flux Nebula
獵戶座深空 - 獵戶座大星雲及馬頭星雲
Orion Deep Sky - Orion nebula & Horsehead Nebula

Photo : Savio Fong

星河科研社西藏自動化天文台 Galaxy Scientific Group Tibet Robotic Observatory

攝星鏡 Officina Stellare RiFast 500 (1900mm f3.8) Astrograph

攝星鏡 APM-LZOS 105 APO (650mm f6.2) Astrograph

赤道儀 Software Bisque Paramount ME Equatorial Mount

冷凍相機 FLI Proline 16803 Cooled CCD Camera

濾鏡 Astrodon LRGB, Ha, SII, OIII Filters



星河科研社
Galaxy Scientific Group

香港火炭坳背灣街2-11號
威力工業中心6樓R室
6R, Valiant Industrial Centre,
2-11 Au Pui Wan Street, Fo Tan, N.T

T. 8106 0660 | F. 8106 0670 | E. info@astro.hk
🌐 www.astro.hk
🛒 eshop.astro.hk



astro.hk



eshop



[Facebook](https://www.facebook.com)



[Instagram](https://www.instagram.com)